

Product datasheet for TA807198

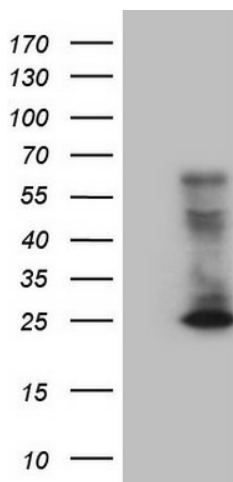
CD3E Mouse Monoclonal Antibody [Clone ID: UCHT1]

Product data:

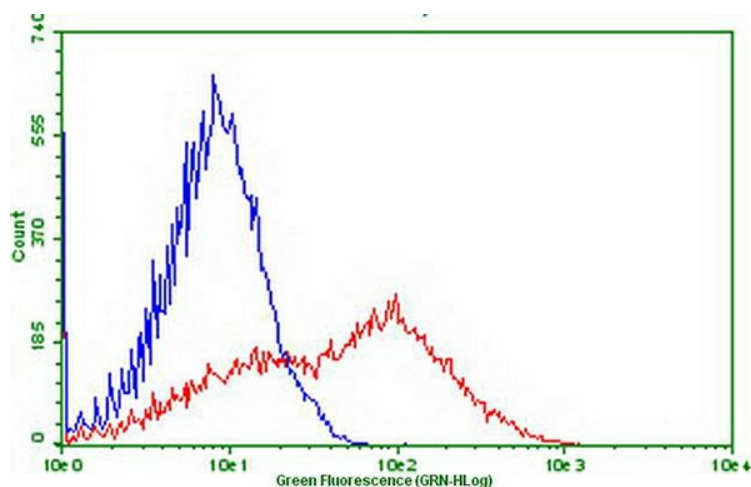
Product Type:	Primary Antibodies
Clone Name:	UCHT1
Applications:	FC, WB
Recommend Dilution:	WB 1:2000, FLOW 1:100
Reactivity:	Human
Host:	Mouse
Isotype:	IgG1
Clonality:	Monoclonal
Immunogen:	Human infant thymocytes and lymphocytes from a patient with Sézary disease
Formulation:	PBS (PH 7.3) containing 1% BSA, 50% glycerol and 0.02% sodium azide.
Concentration:	1 mg/ml
Purification:	Purified from mouse ascites fluids or tissue culture supernatant by affinity chromatography (protein A/G)
Predicted Protein Size:	20.7 kDa
Gene Name:	CD3e molecule
Database Link:	NP_000724 Entrez Gene 916 Human
Background:	The protein encoded by this gene is the CD3-epsilon polypeptide, which together with CD3-gamma, -delta and -zeta, and the T-cell receptor alpha/beta and gamma/delta heterodimers, forms the T-cell receptor-CD3 complex. This complex plays an important role in coupling antigen recognition to several intracellular signal-transduction pathways. The genes encoding the epsilon, gamma and delta polypeptides are located in the same cluster on chromosome 11. The epsilon polypeptide plays an essential role in T-cell development. Defects in this gene cause immunodeficiency. This gene has also been linked to a susceptibility to type I diabetes in women. [provided by RefSeq, Jul 2008]
Synonyms:	IMD18; T3E; TCRE
Protein Families:	Druggable Genome, Transmembrane
Protein Pathways:	Hematopoietic cell lineage, Primary immunodeficiency, T cell receptor signaling pathway

[View online »](#)

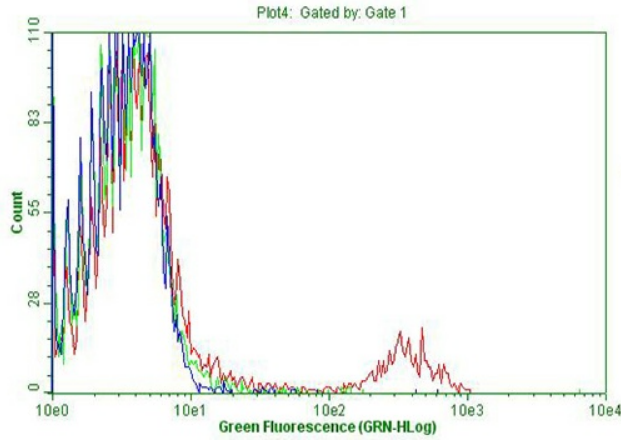
Product images:



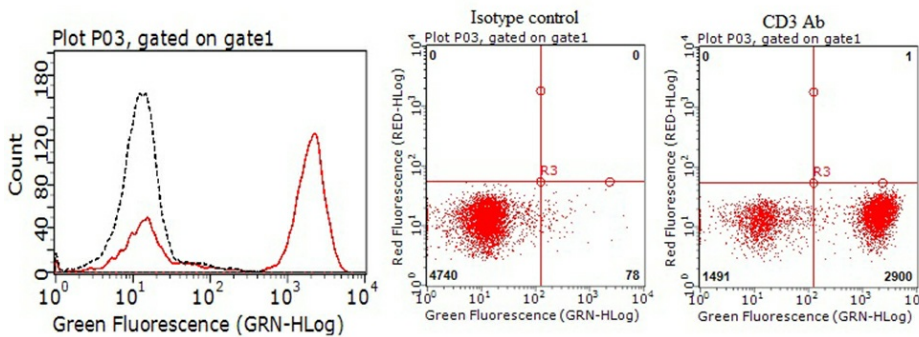
HEK293T cells were transfected with the pCMV6-ENTRY control (Left lane) or pCMV6-ENTRY CD3 ([RC208276], Right lane) cDNA for 48 hrs and lysed. Equivalent amounts of cell lysates (5 ug per lane) were separated by SDS-PAGE and immunoblotted with anti-CD3 (1:2000). Positive lysates [LY400242] (100ug) and [LC400242] (20ug) can be purchased separately from OriGene.



Flow cytometric Analysis of live Jurkat cells, using anti-CD3 antibody (TA807198), (Red), compared to a nonspecific negative control antibody (Mouse-IgG), (Blue) (1:100).



Flow cytometric Analysis of living RBC-lysed human peripheral blood cells, using anti-CD3 antibody (TA807198, Red), compared to an IgG isotype control (green), and negative control (PBS, Blue) (1:100).



Flow cytometric Analysis of living peripheral blood mononuclear cells (PBMC), using anti-CD3 antibody (TA807198, Red), compared to an IgG isotype control (Blank) (1:100).