

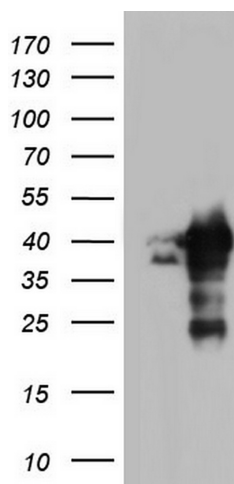
## Product datasheet for **TA804086**

### **NRBF2 Mouse Monoclonal Antibody [Clone ID: OTI2A6]**

#### **Product data:**

Product Type:	Primary Antibodies
Clone Name:	OTI2A6
Applications:	WB
Recommend Dilution:	WB 1:2000
Reactivity:	Human
Host:	Mouse
Isotype:	IgG1
Clonality:	Monoclonal
Immunogen:	Full length human recombinant protein of human NRBF2 (NP_110386) produced in E.coli.
Formulation:	PBS (PH 7.3) containing 1% BSA, 50% glycerol and 0.02% sodium azide.
Concentration:	1 mg/ml
Purification:	Purified from mouse ascites fluids or tissue culture supernatant by affinity chromatography (protein A/G)
Predicted Protein Size:	32.2 kDa
Gene Name:	nuclear receptor binding factor 2
Database Link:	<a href="#">NP_110386 Entrez Gene 29982 Human</a>
Synonyms:	COPR; COPR1; COPR2; NRBF-2
Protein Families:	Druggable Genome

[View online »](#)

**Product images:**


HEK293T cells were transfected with the pCMV6-ENTRY control (Left lane) or pCMV6-ENTRY NRBF2 ([RC204061], Right lane) cDNA for 48 hrs and lysed. Equivalent amounts of cell lysates (5 ug per lane) were separated by SDS-PAGE and immunoblotted with anti-NRBF2. Positive lysates [LY410731] (100ug) and [LC410731] (20ug) can be purchased separately from OriGene.