

Product datasheet for TA801568

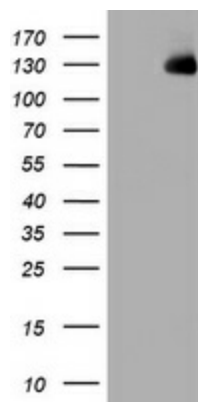
KIBRA (WWC1) Mouse Monoclonal Antibody [Clone ID: OT11H8]

Product data:

Product Type:	Primary Antibodies
Clone Name:	OT11H8
Applications:	WB
Recommend Dilution:	WB 1:2000
Reactivity:	Human
Host:	Mouse
Isotype:	IgG2a
Clonality:	Monoclonal
Immunogen:	Full length human recombinant protein of human WWC1 (NP_056053) produced in HEK293T cell.
Formulation:	PBS (PH 7.3) containing 1% BSA, 50% glycerol and 0.02% sodium azide.
Concentration:	1 mg/ml
Purification:	Purified from mouse ascites fluids or tissue culture supernatant by affinity chromatography (protein A/G)
Predicted Protein Size:	125.1 kDa
Gene Name:	WW and C2 domain containing 1
Database Link:	NP_056053 Entrez Gene 23286 Human
Background:	The protein encoded by this gene is a cytoplasmic phosphoprotein that interacts with PRKC-zeta and dynein light chain-1. Alleles of this gene have been found that enhance memory in some individuals. Three transcript variants encoding different isoforms have been found for this gene. [provided by RefSeq, Mar
Synonyms:	HBEBP3; HBEBP36; KIBRA; MEMRYQTL; PPP1R168

[View online »](#)

Product images:



HEK293T cells were transfected with the pCMV6-ENTRY control (Left lane) or pCMV6-ENTRY WWC1 ([RC214592], Right lane) cDNA for 48 hrs and lysed. Equivalent amounts of cell lysates (5 ug per lane) were separated by SDS-PAGE and immunoblotted with anti-WWC1. Positive lysates [LY414708] (100ug) and [LC414708] (20ug) can be purchased separately from OriGene.