

Product datasheet for TA504349

PSMB9 Mouse Monoclonal Antibody [Clone ID: OTI1D1]

Product data:

Product Type:	Primary Antibodies
Clone Name:	OTI1D1
Applications:	FC, IF, IHC, WB
Recommend Dilution:	WB 1:2000, IHC 1:150, IF 1:100, FLOW 1:100
Reactivity:	Human
Host:	Mouse
Isotype:	IgG2a
Clonality:	Monoclonal
Immunogen:	Human recombinant protein fragment corresponding to amino acids 21-219 of human PSMB9(NP_002791) produced in E.coli.
Formulation:	PBS (PH 7.3) containing 1% BSA, 50% glycerol and 0.02% sodium azide.
Concentration:	1.29 mg/ml
Purification:	Purified from mouse ascites fluids or tissue culture supernatant by affinity chromatography (protein A/G)
Predicted Protein Size:	23.1 kDa
Gene Name:	proteasome subunit beta 9
Database Link:	NP_002791 Entrez Gene 5698 Human
Background:	<p>The proteasome is a multicatalytic proteinase complex with a highly ordered ring-shaped 20S core structure. The core structure is composed of 4 rings of 28 non-identical subunits; 2 rings are composed of 7 alpha subunits and 2 rings are composed of 7 beta subunits. Proteasomes are distributed throughout eukaryotic cells at a high concentration and cleave peptides in an ATP/ubiquitin-dependent process in a non-lysosomal pathway. An essential function of a modified proteasome, the immunoproteasome, is the processing of class I MHC peptides. This gene encodes a member of the proteasome B-type family, also known as the T1B family, that is a 20S core beta subunit. This gene is located in the class II region of the MHC (major histocompatibility complex). Expression of this gene is induced by gamma interferon and this gene product replaces catalytic subunit 1 (proteasome beta 6 subunit) in the immunoproteasome. Proteolytic processing is required to generate a mature subunit. [provided by RefSeq, Mar</p>

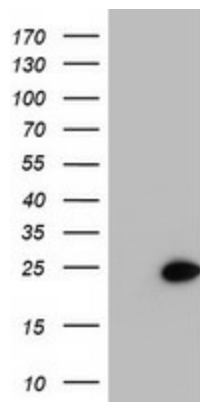

[View online »](#)

Synonyms: beta1i; LMP2; PSMB6i; RING12

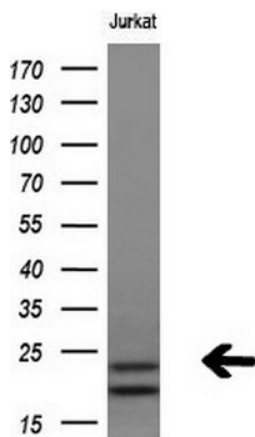
Protein Families: Druggable Genome, Protease

Protein Pathways: Proteasome

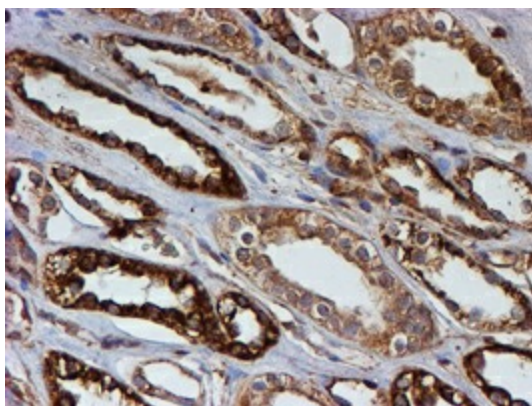
Product images:



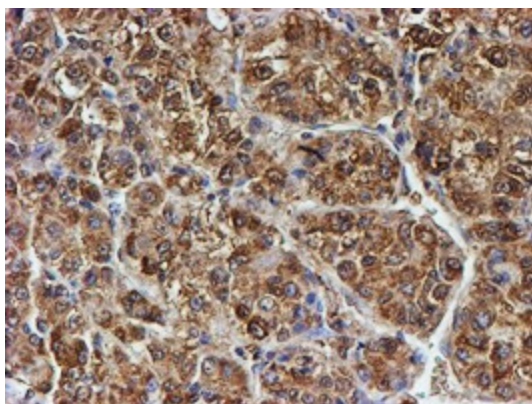
HEK293T cells were transfected with the pCMV6-ENTRY control (Left lane) or pCMV6-ENTRY PSMB9 ([RC209001], Right lane) cDNA for 48 hrs and lysed. Equivalent amounts of cell lysates (5 ug per lane) were separated by SDS-PAGE and immunoblotted with anti-PSMB9. Positive lysates [LY419098] (100ug) and [LC419098] (20ug) can be purchased separately from OriGene.



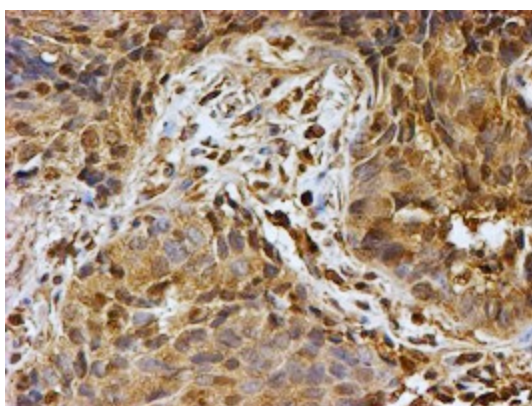
Western blot analysis of extracts (10ug) from 1 cell line by using anti-PSMB9 monoclonal antibody (1:200).



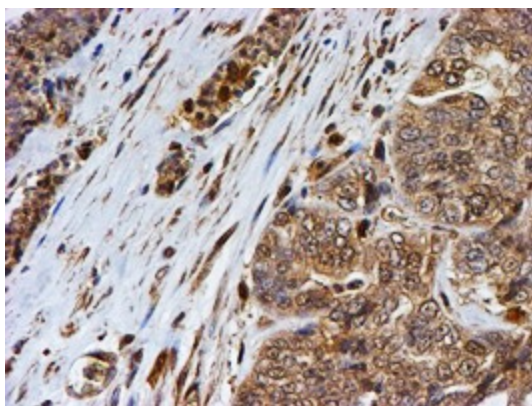
Immunohistochemical staining of paraffin-embedded Human Kidney tissue within the normal limits using anti-PSMB9 mouse monoclonal antibody. (Heat-induced epitope retrieval by 10mM citric buffer, pH6.0, 100°C for 10min, TA504349)



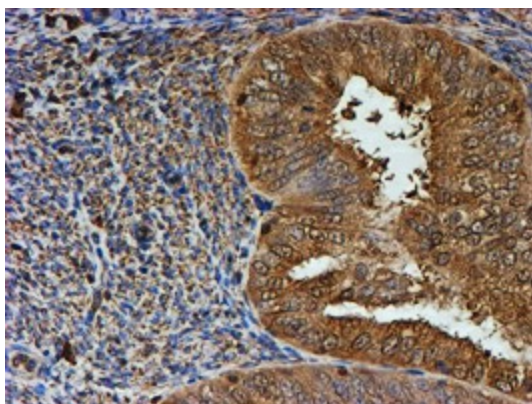
Immunohistochemical staining of paraffin-embedded Carcinoma of Human liver tissue using anti-PSMB9 mouse monoclonal antibody. (Heat-induced epitope retrieval by 10mM citric buffer, pH6.0, 100°C for 10min, TA504349)



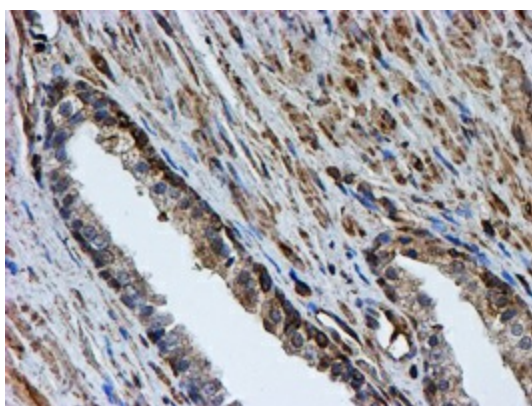
Immunohistochemical staining of paraffin-embedded Carcinoma of Human lung tissue using anti-PSMB9 mouse monoclonal antibody. (Heat-induced epitope retrieval by 10mM citric buffer, pH6.0, 100°C for 10min, TA504349)



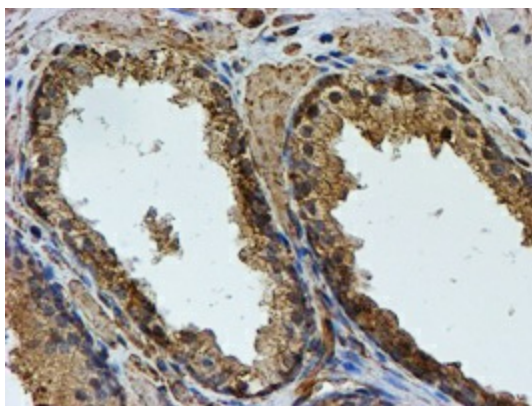
Immunohistochemical staining of paraffin-embedded Adenocarcinoma of Human ovary tissue using anti-PSMB9 mouse monoclonal antibody. (Heat-induced epitope retrieval by 10mM citric buffer, pH6.0, 100°C for 10min, TA504349)



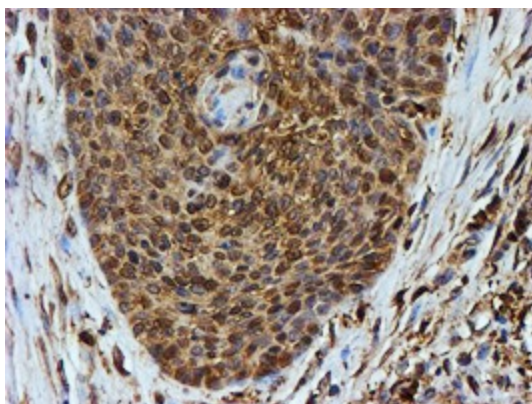
Immunohistochemical staining of paraffin-embedded Adenocarcinoma of Human endometrium tissue using anti-PSMB9 mouse monoclonal antibody. (Heat-induced epitope retrieval by 10mM citric buffer, pH6.0, 100°C for 10min, TA504349)



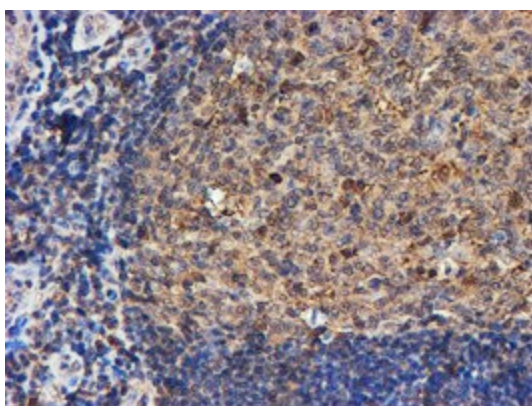
Immunohistochemical staining of paraffin-embedded Human prostate tissue within the normal limits using anti-PSMB9 mouse monoclonal antibody. (Heat-induced epitope retrieval by 10mM citric buffer, pH6.0, 100°C for 10min, TA504349)



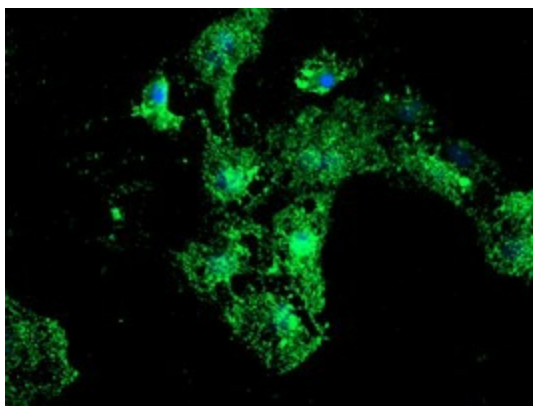
Immunohistochemical staining of paraffin-embedded Carcinoma of Human prostate tissue using anti-PSMB9 mouse monoclonal antibody. (Heat-induced epitope retrieval by 10mM citric buffer, pH6.0, 100°C for 10min, TA504349)



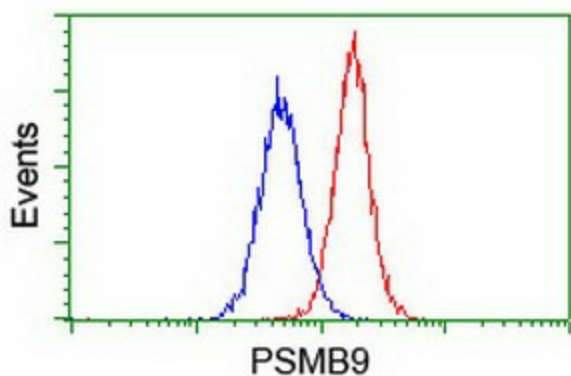
Immunohistochemical staining of paraffin-embedded Carcinoma of Human bladder tissue using anti-PSMB9 mouse monoclonal antibody. (Heat-induced epitope retrieval by 10mM citric buffer, pH6.0, 100°C for 10min, TA504349)



Immunohistochemical staining of paraffin-embedded Human tonsil within the normal limits using anti-PSMB9 mouse monoclonal antibody. (Heat-induced epitope retrieval by 10mM citric buffer, pH6.0, 100°C for 10min, TA504349)



Western blot analysis of extracts (10ug) from Jurkat cell line by using anti-PSMB9 monoclonal antibody (1:200).



Flow cytometric Analysis of Jurkat cells, using anti-PSMB9 antibody (TA504349), (Red), compared to a nonspecific negative control antibody, (Blue).