

Product datasheet for **TA502844**

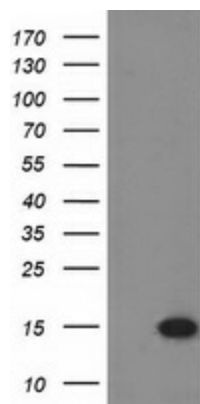
EIF1 Mouse Monoclonal Antibody [Clone ID: OTI2B9]

Product data:

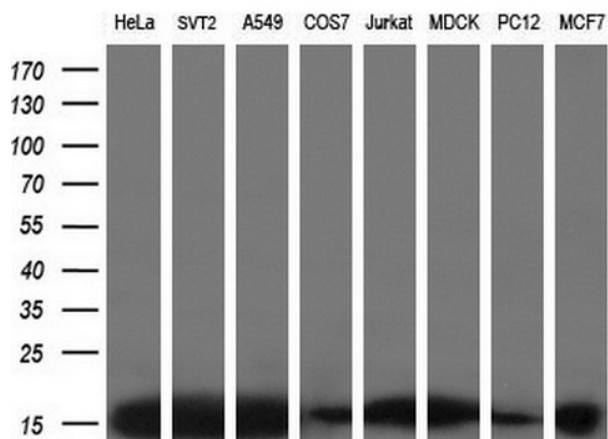
Product Type:	Primary Antibodies
Clone Name:	OTI2B9
Applications:	FC, IF, IHC, WB
Recommend Dilution:	WB 1:2000, IHC 1:150, IF 1:100, FLOW 1:100
Reactivity:	Human
Host:	Mouse
Isotype:	IgG2a
Clonality:	Monoclonal
Immunogen:	Full length human recombinant protein of human EIF1 (NP_005792) produced in HEK293T cell.
Formulation:	PBS (PH 7.3) containing 1% BSA, 50% glycerol and 0.02% sodium azide.
Concentration:	1.32 mg/ml
Purification:	Purified from mouse ascites fluids or tissue culture supernatant by affinity chromatography (protein A/G)
Predicted Protein Size:	12.6 kDa
Gene Name:	eukaryotic translation initiation factor 1
Database Link:	NP_005792 Entrez Gene 10209 Human
Synonyms:	A121; EIF-1; EIF1A; ISO1; SUI1

[View online »](#)

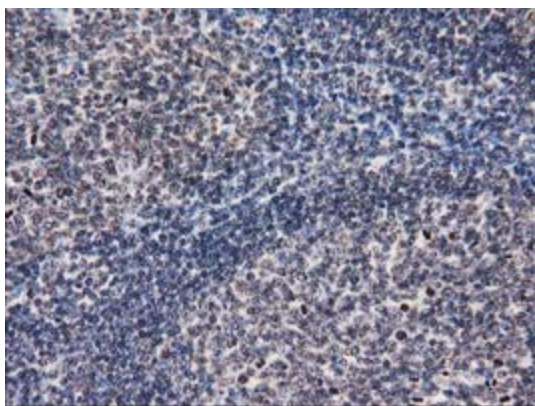
Product images:



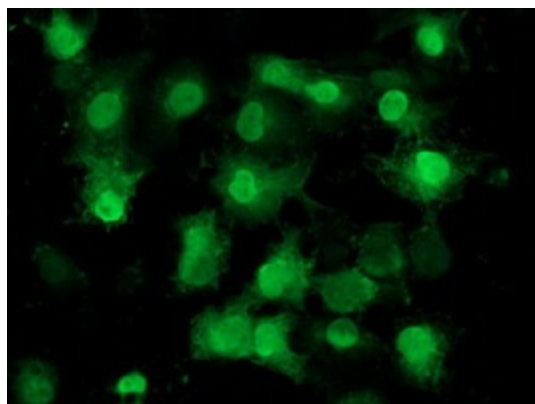
HEK293T cells were transfected with the pCMV6-ENTRY control (Left lane) or pCMV6-ENTRY EIF1 ([RC201271], Right lane) cDNA for 48 hrs and lysed. Equivalent amounts of cell lysates (5 ug per lane) were separated by SDS-PAGE and immunoblotted with anti-EIF1. Positive lysates [LY401762] (100ug) and [LC401762] (20ug) can be purchased separately from OriGene.



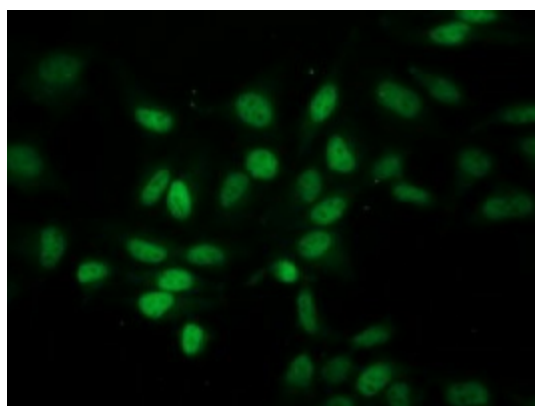
Western blot analysis of extracts (10ug) from 8 different cell lines by using anti-EIF1 monoclonal antibody at 1:200 dilution.



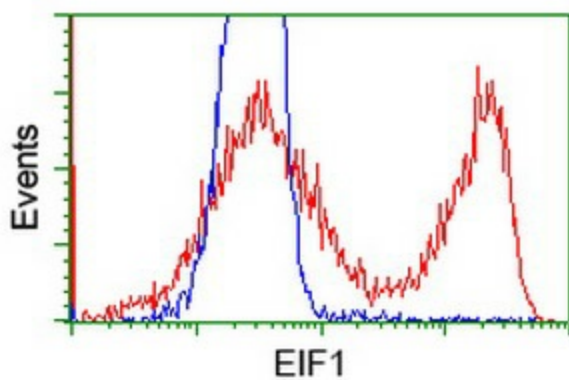
Immunohistochemical staining of paraffin-embedded Human lymph node tissue within the normal limits using anti-EIF1 mouse monoclonal antibody. (Heat-induced epitope retrieval by 10mM citric buffer, pH6.0, 100°C for 10min, TA502844)



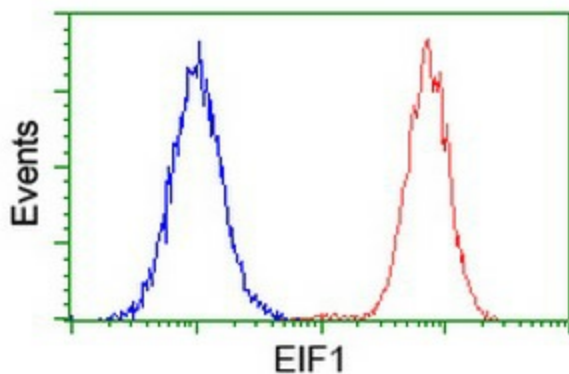
Anti-EIF1 mouse monoclonal antibody (TA502844) immunofluorescent staining of COS7 cells transiently transfected by pCMV6-ENTRY EIF1 ([RC201271]).



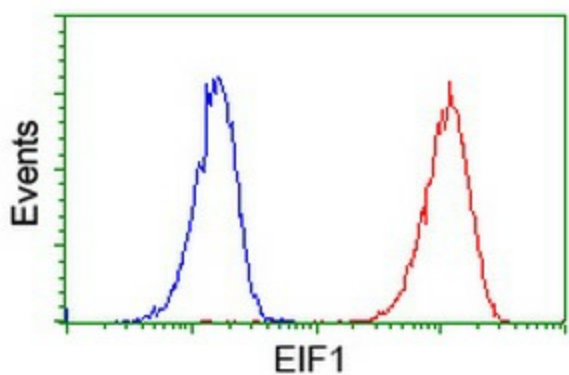
Immunofluorescent staining of HeLa cells using anti-EIF1 mouse monoclonal antibody (TA502844).



HEK293T cells transfected with either [RC201271] overexpress plasmid (Red) or empty vector control plasmid (Blue) were immunostained by anti-EIF1 antibody (TA502844), and then analyzed by flow cytometry.



Flow cytometric Analysis of HeLa cells, using anti-EIF1 antibody (TA502844), (Red), compared to a nonspecific negative control antibody, (Blue).



Flow cytometric Analysis of Jurkat cells, using anti-EIF1 antibody (TA502844), (Red), compared to a nonspecific negative control antibody, (Blue).