

Product datasheet for TA500579

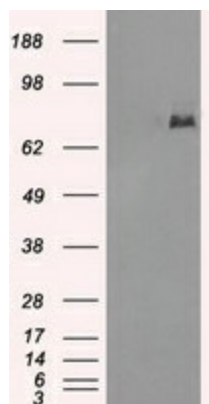
Cytochrome P450 Reductase (POR) Mouse Monoclonal Antibody [Clone ID: OTI5H5]

Product data:

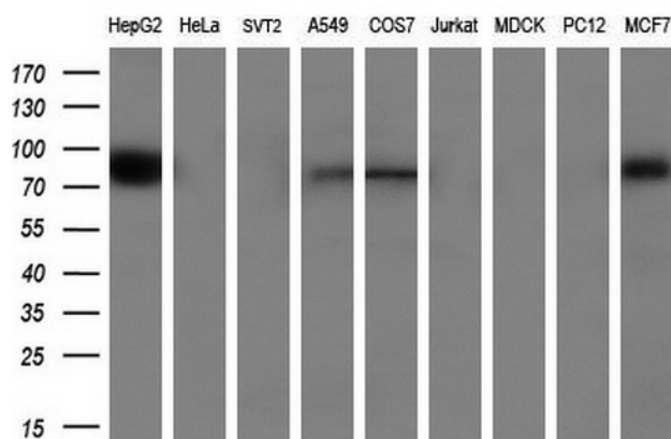
Product Type:	Primary Antibodies
Clone Name:	OTI5H5
Applications:	IF, IHC, WB
Recommend Dilution:	WB 1:500, IHC 1:50, IF 1:50
Reactivity:	Human
Host:	Mouse
Isotype:	IgG1
Clonality:	Monoclonal
Immunogen:	Full length human recombinant protein of human POR (NP_000932) produced in HEK293T cell.
Formulation:	PBS (pH 7.3) containing 1% BSA, 50% glycerol and 0.02% sodium azide.
Concentration:	1 mg/ml
Purification:	Purified from mouse ascites fluids or tissue culture supernatant by affinity chromatography (protein A/G)
Predicted Protein Size:	76.9 kDa
Gene Name:	cytochrome p450 oxidoreductase
Database Link:	NP_000932 Entrez Gene 5447 Human
Background:	This gene encodes an endoplasmic reticulum membrane oxidoreductase with an FAD-binding domain and a flavodoxin-like domain. The protein binds two cofactors, FAD and FMN, which allow it to donate electrons directly from NADPH to all microsomal P450 enzymes. Mutations in this gene have been associated with various diseases, including apparent combined P450C17 and P450C21 deficiency, amenorrhea and disordered steroidogenesis, congenital adrenal hyperplasia and Antley-Bixler syndrome. [provided by RefSeq]
Synonyms:	CPR; CYPOR; P450R
Protein Families:	Druggable Genome, P450, Transmembrane

[View online »](#)

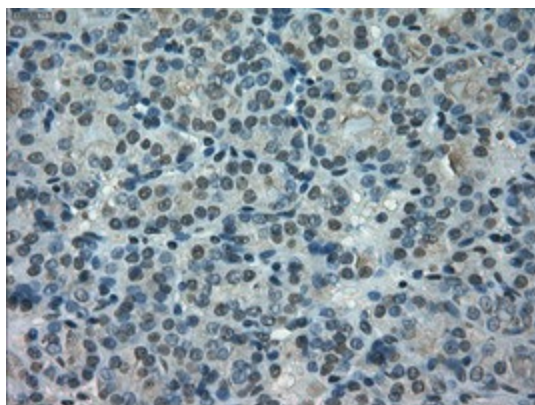
Product images:



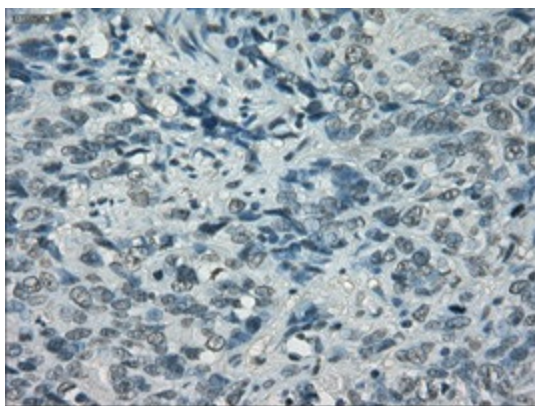
HEK293T cells were transfected with the pCMV6-ENTRY control (Left lane) or pCMV6-ENTRY POR ([RC202172], Right lane) cDNA for 48 hrs and lysed. Equivalent amounts of cell lysates (5 ug per lane) were separated by SDS-PAGE and immunoblotted with anti-POR. Positive lysates [LY424436] (100ug) and [LC424436] (20ug) can be purchased separately from OriGene.



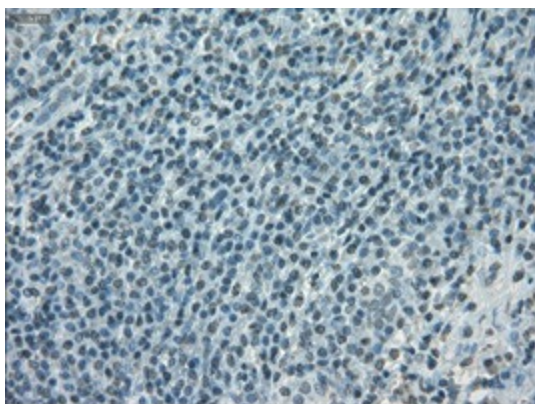
Western blot analysis of extracts (35ug) from 9 different cell lines by using anti-POR monoclonal antibody (HepG2: human; HeLa: human; SVT2: mouse; A549: human; COS7: monkey; Jurkat: human; MDCK: canine; PC12: rat; MCF7: human) (1:200).



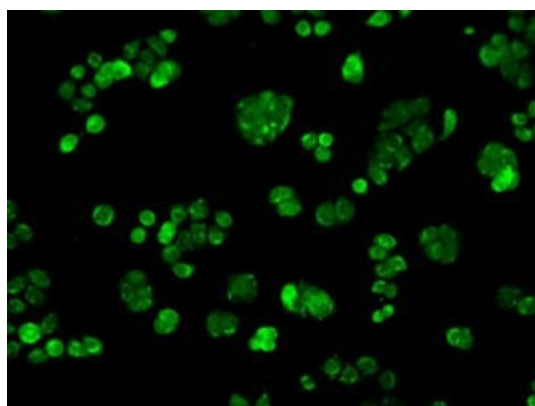
Immunohistochemical staining of paraffin-embedded Carcinoma of Human thyroid tissue using anti-POR mouse monoclonal antibody. (Heat-induced epitope retrieval by 10mM citric buffer, pH6.0, 100°C for 10min, TA500579)



Immunohistochemical staining of paraffin-embedded Carcinoma of Human bladder tissue using anti-POR mouse monoclonal antibody. (Heat-induced epitope retrieval by 10mM citric buffer, pH6.0, 100°C for 10min, TA500579)



Immunohistochemical staining of paraffin-embedded Human lymphoma tissue using anti-POR mouse monoclonal antibody. (Heat-induced epitope retrieval by 10mM citric buffer, pH6.0, 100°C for 10min, TA500579)



Immunofluorescent staining of HT29 cells using anti-POR mouse monoclonal antibody (TA500579).