

Product datasheet for TA336952

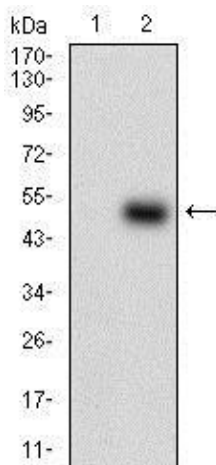
PON1 Mouse Monoclonal Antibody [Clone ID: 4G8D3]

Product data:

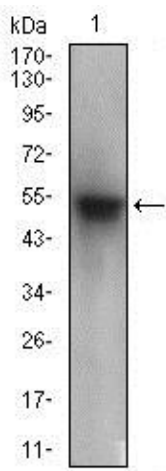
Product Type:	Primary Antibodies
Clone Name:	4G8D3
Applications:	FC, IHC, WB
Recommend Dilution:	WB: 1:500 - 1:2000, FC: 1:200 - 1:400, IHC: 1:200 - 1:1000
Reactivity:	Human
Host:	Mouse
Isotype:	IgG1
Clonality:	Monoclonal
Immunogen:	Partial recombinant human PON1 (between residues 1-200) expressed in E. coli [Uniprot P27169]
Formulation:	PBS, 0.03% Sodium Azide. Store at 4C short term. Aliquot and store at -20C long term. Avoid freeze-thaw cycles.
Concentration:	1 mg/ml
Purification:	Ammonium sulfate precipitation
Gene Name:	paraoxonase 1
Database Link:	NP_000437 Entrez Gene 5444 Human
Background:	PON1 is known to hydrolyze the toxic metabolites of a variety of organophosphorus insecticides.
Synonyms:	ESA; MVCD5; PON
Protein Families:	Druggable Genome, Secreted Protein
Protein Pathways:	Metabolic pathways

[View online »](#)

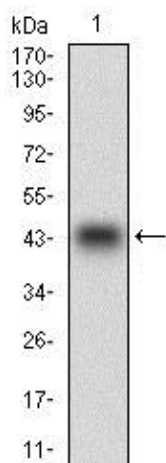
Product images:



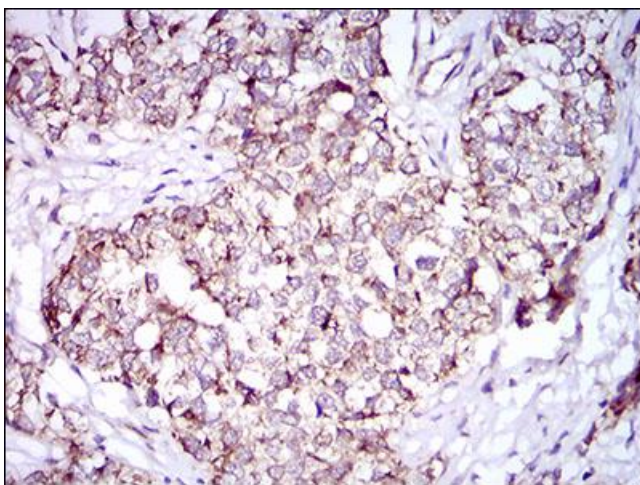
Western Blot: PON1 Antibody (4G8D3) TA336952
- Western blot analysis of PON1 in (1) HEK293 and (2) PON1 hlgGFc transfected HEK293 cell lysate.



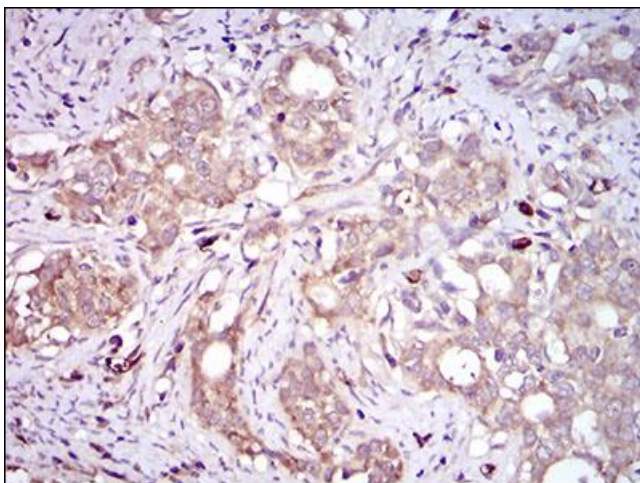
Western Blot: PON1 Antibody (4G8D3) TA336952
- Western blot analysis of PON1 in human plasma cell lysate.



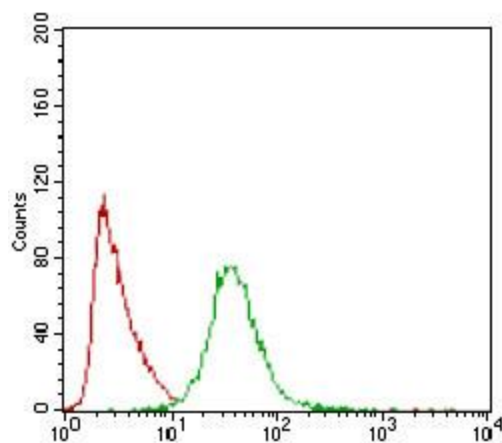
Western Blot: PON1 Antibody (4G8D3) TA336952
- Western blot analysis of PON1 in human PON1 recombinant protein. (Expected MW is 40.6 kDa).



Immunohistochemistry: PON1 Antibody (4G8D3) TA336952 - Immunohistochemical analysis of paraffin-embedded human bladder cancer tissues with DAB staining.



Immunohistochemistry: PON1 Antibody (4G8D3) TA336952 - Immunohistochemical analysis of paraffin-embedded human cervical cancer tissues with DAB staining.



Flow Cytometry: PON1 Antibody (4G8D3)
TA336952 - Flow cytometric analysis of HeLa cells
using PON1 mouse mAb (green) and negative
control (red).