

Product datasheet for TA336602

Neurofilament (NEFL) Mouse Monoclonal Antibody [Clone ID: DA2]

Product data:

| | |
|---------------------|--|
| Product Type: | Primary Antibodies |
| Clone Name: | DA2 |
| Applications: | IF, WB |
| Recommend Dilution: | WB: 1:5000-1:10000, IF: 1:100-1:500, IHC: 1:250 |
| Reactivity: | Human, Mammalian, Mouse, Rat, Avian |
| Host: | Mouse |
| Isotype: | IgG1, kappa |
| Clonality: | Monoclonal |
| Immunogen: | Native Neurofilament Light protein purified from pig spinal cord [UniProt# P02547] |
| Formulation: | Preservative: 0.05% Sodium Azide. Aliquot and store at -20C or -80C. Avoid freeze-thaw cycles. |
| Concentration: | This product is unpurified. The exact concentration of antibody is not quantifiable. |
| Purification: | Ascites |
| Gene Name: | neurofilament, light polypeptide |
| Database Link: | NP_006149 Entrez Gene 18039 MouseEntrez Gene 83613 RatEntrez Gene 4747 Human |
| Background: | Neuronal intermediate filaments or neurofilaments are found specifically in neurons where they play a key role in maintaining neuronal morphology as well as in regenerating myelinated axons. Neurofilaments contain three subunits: a light polypeptide (NEFL/NFL), a medium polypeptide (NEFM/NFM), and a heavy polypeptide (NEFH/NFH), with molecular weights of 68, 160, and 212 kD respectively. 68kD Neurofilament Light (NEFL) is the most abundant of three neurofilament proteins and, like other nonepithelial intermediate filament proteins, it can form homopolymeric 10-nm filaments. NEFL forms the backbone of neurofilament and perturbations in its expression leads to motor neuron diseases, such as Charcot-Marie-Tooth disease, type 2E (CMT2E). In addition to its influence on the nervous system, NEFL has been shown to act as a tumor suppressor and has been linked to carcinogenesis/metastasis of several malignancies including breast, prostate, lung, colon, and bladder cancer. |
| Synonyms: | CMT1F; CMT2E; NF-L; NF68; NFL; PPP1R110 |

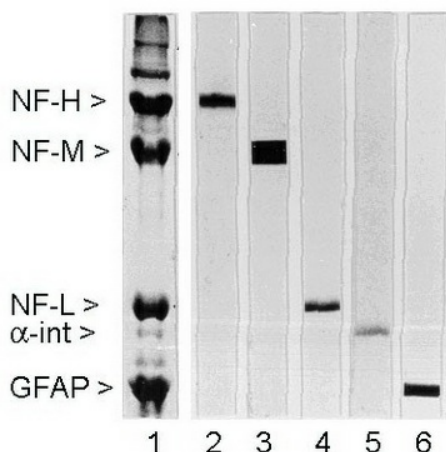
[View online »](#)

Note: This 68kDa Neurofilament Light antibody is useful in Immunocytochemistry/Immunofluorescence, Immunohistochemistry and Western blot.

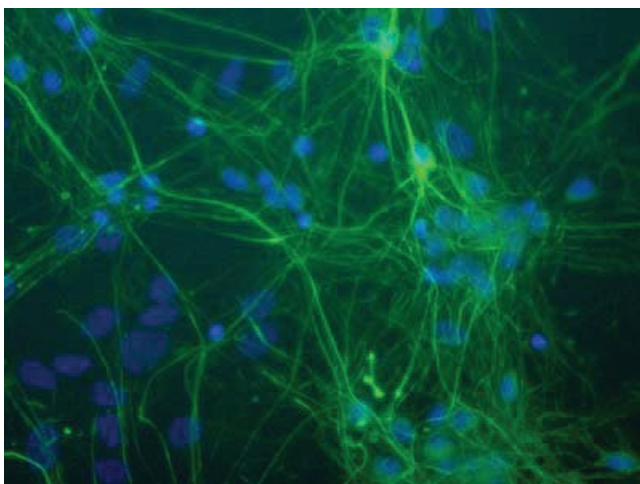
Protein Families: Druggable Genome, ES Cell Differentiation/IPS

Protein Pathways: Amyotrophic lateral sclerosis (ALS)

Product images:



Western Blot: 68kDa Neurofilament Light Antibody (DA2) [TA336602] - Rat spinal cord homogenate showing the major intermediate filament proteins of the nervous system (lane 1). The remaining lanes show blots of this material stained with various antibodies.



Immunocytochemistry/Immunofluorescence: 68kDa Neurofilament Light Antibody (DA2) [TA336602] - Staining of neurons in culture using NF-L monoclonal DA2 antibody (green) taken with a 40X lens. Nuclei are stained blue. Photo Courtesy of Dr. Gerry Shaw.