

Product datasheet for TA336485

TAPA1 (CD81) Mouse Monoclonal Antibody [Clone ID: 1D6]

Product data:

Product Type:	Primary Antibodies
Clone Name:	1D6
Applications:	FC, IF, IHC, WB
Recommend Dilution:	WB: 1-2 ug/ml, FC: 0.2 - 1 ug per million cells, IF: 1:10-1:100, IHC: 1:100, IHC-P: 1:100, IP: 1:10-1:500
Reactivity:	Goat, Human, Primate, Sheep
Host:	Mouse
Isotype:	IgG1, kappa
Clonality:	Monoclonal
Immunogen:	Aggregated OCI-Ly8 human B cell line
Formulation:	PBS containing 0.05% BSA, 0.05% Sodium Azide. Store at 4C short term. Aliquot and store at -20C long term. Avoid freeze-thaw cycles.
Concentration:	1 mg/ml
Purification:	Protein G purified
Gene Name:	CD81 molecule
Database Link:	NP_004347 Entrez Gene 975 Human
Background:	TAPA1, also known as CD81, is found in the plasma membrane in lymphocytes and is believed to play an important role in the regulation of lymphoma cell growth. This protein is primarily found on B and T cells (lymphocytes) in humans. TAPA1 appears to be involved in a variety of cellular processes including activation, proliferation and differentiation. It is believed to act as a viral receptor for HCV and may play a crucial role in cell signaling from its place embedded in the plasma membrane. Mutations affecting CD81 can cause immunodeficiency- a disease that is characterized by antibody deficiency, hypogammaglobulinemia, recurrent bacterial infections due to a lack of an immune response.
Synonyms:	CVID6; S5.7; TAPA1; TSPAN28

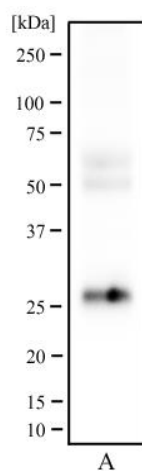
[View online »](#)

Note: NB100-65805 is a potent TAPA1/CD81 reagent, it induces homotypic adhesion and has powerful anti-proliferative effects. For Flow Cytometry: Use 10 ul of the suggested working dilution to label 10^6 cells in 100 ul.

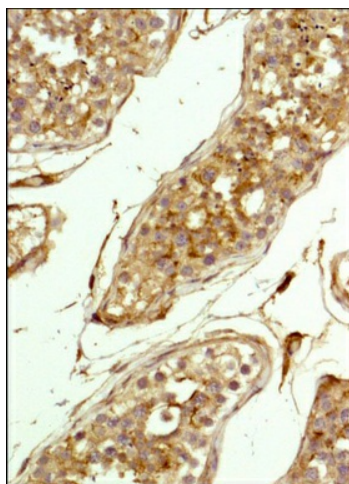
Protein Families: Druggable Genome, ES Cell Differentiation/IPS, Transmembrane

Protein Pathways: B cell receptor signaling pathway

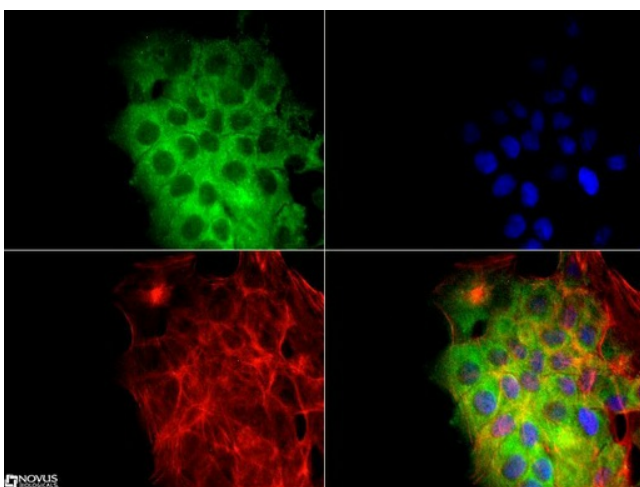
Product images:



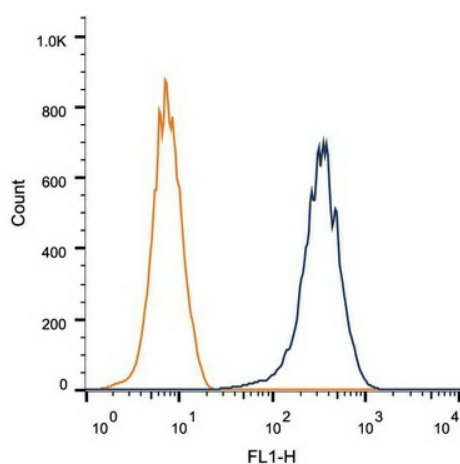
Western Blot: CD81 Antibody (1D6) TA336485 - Western blot analysis of human testis tissue (A) using CD81 antibody at a concentration of 2 ug/ml.



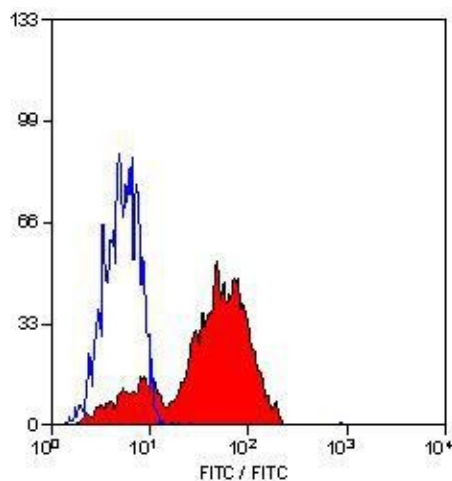
Immunohistochemistry-Paraffin: TAPA1 Antibody (1D6) TA336485 - IHC staining of TAPA1 in human testis using DAB with hematoxylin counterstain.



Immunocytochemistry/Immunofluorescence:
TAPA1 Antibody (1D6) TA336485 - The TAPA1 Antibody (1D6) was tested in A431 cells at a 1:10 dilution against DyLight 488 (green). Actin was counterstained against Phalloidin 568 (red) and cells were mounted in DA



Flow Cytometry: CD81 Antibody (1D6) TA336485 - Surface flow cytometric staining of 1×10^6 PBMC cells using CD81 antibody (dark blue). Isotype control shown in orange. An antibody concentration of $1 \mu\text{g}/1 \times 10^6$ cells was used.



Flow Cytometry: TAPA1 Antibody (1D6) TA336485 - Staining of human peripheral blood lymphocytes.