

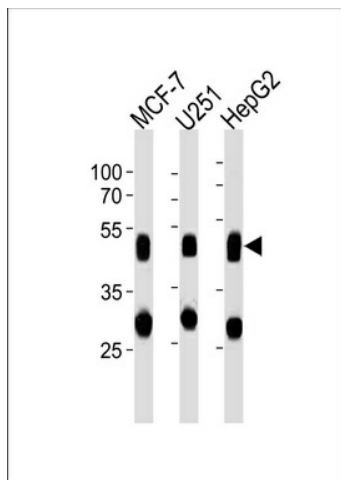
Product datasheet for TA324903

Cathepsin D (CTSD) Mouse Monoclonal Antibody [Clone ID: 892CT11.1.1]

Product data:

Product Type:	Primary Antibodies
Clone Name:	892CT11.1.1
Applications:	WB
Recommend Dilution:	WB: 1:1000
Reactivity:	Human
Host:	Mouse
Isotype:	IgG1
Clonality:	Monoclonal
Immunogen:	Purified His-tagged CTSD protein was used to produced this monoclonal antibody.
Formulation:	Purified monoclonal antibody supplied in PBS with 0.09% (W/V) sodium azide.
Concentration:	0.35 mg/ml
Purification:	This antibody is purified through a protein G column, followed by dialysis against PBS.
Predicted Protein Size:	44552 Da
Gene Name:	cathepsin D
Database Link:	NP_001900 Entrez Gene 1509 Human
Synonyms:	CLN10; CPSD; HEL-S-130P
Protein Families:	Druggable Genome, Protease
Protein Pathways:	Lysosome

[View online »](#)

Product images:

CTSD Antibody (Cat. #TA324903) western blot analysis in MCF-7, U251, HepG2 cell line lysates (35ug/lane). This demonstrates the CTSD antibody detected the CTSD protein (arrow).